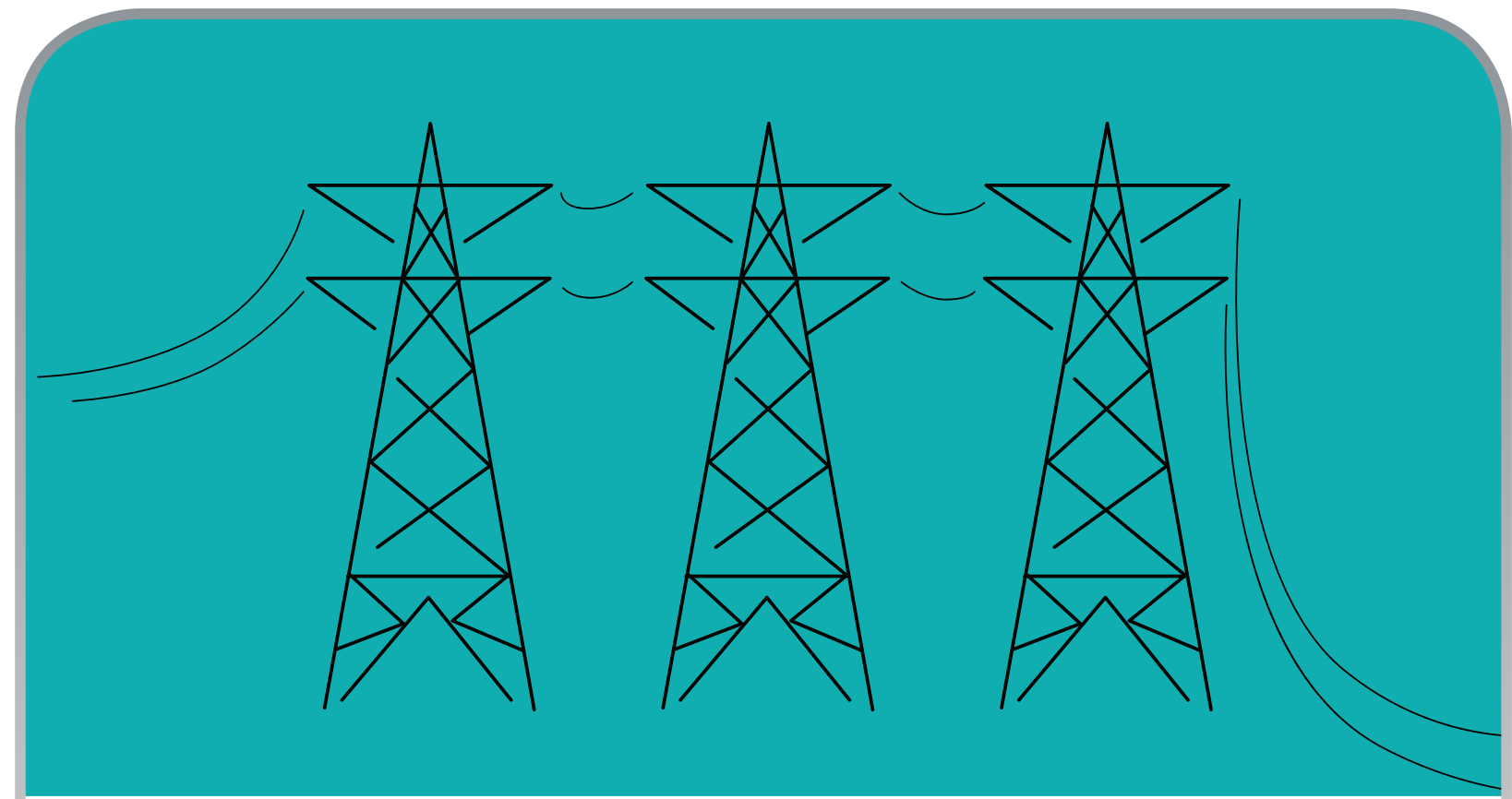


HOW THE PROJECT WORKS



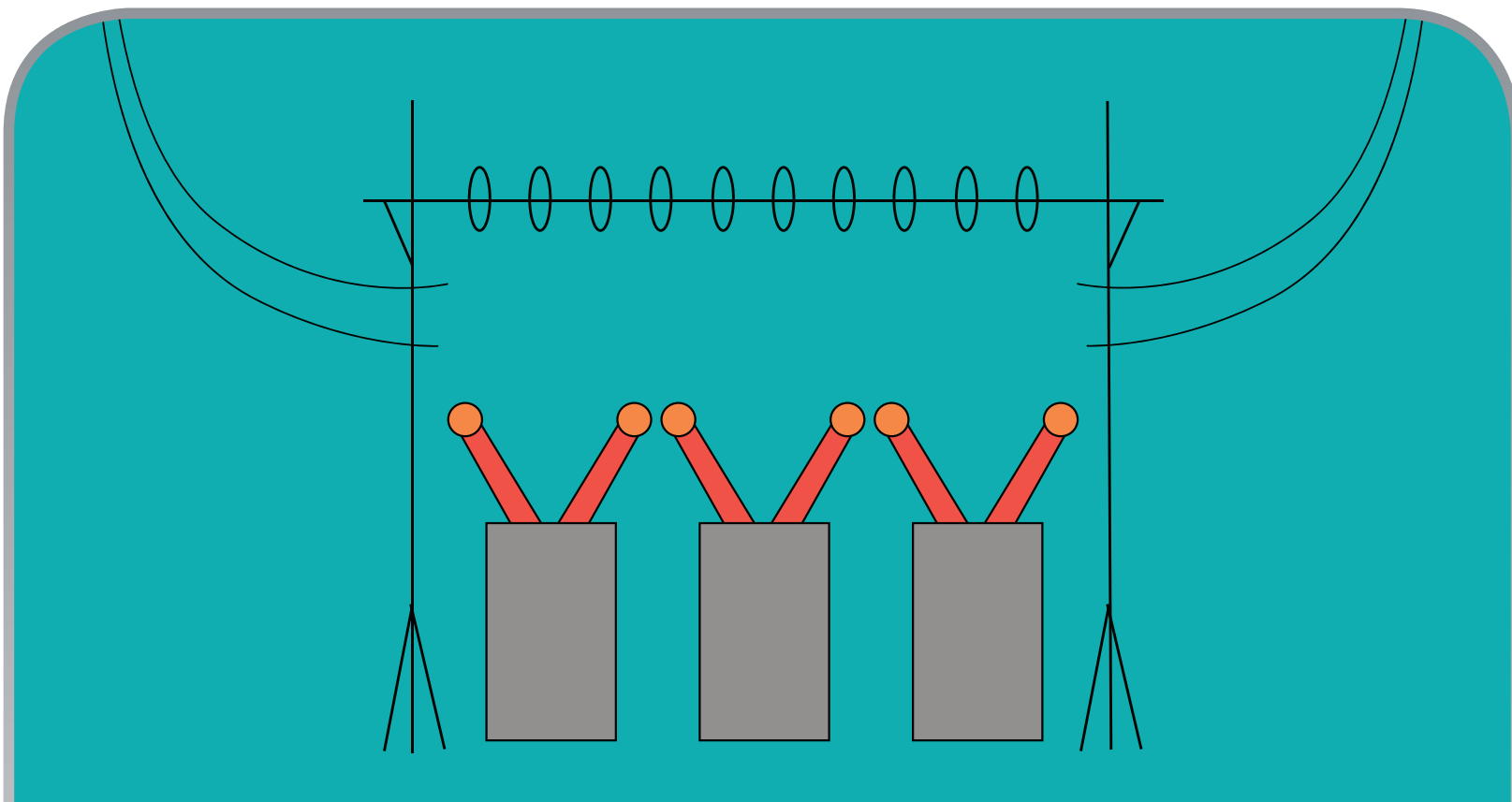
1 WIND FARM

Electricity is generated.



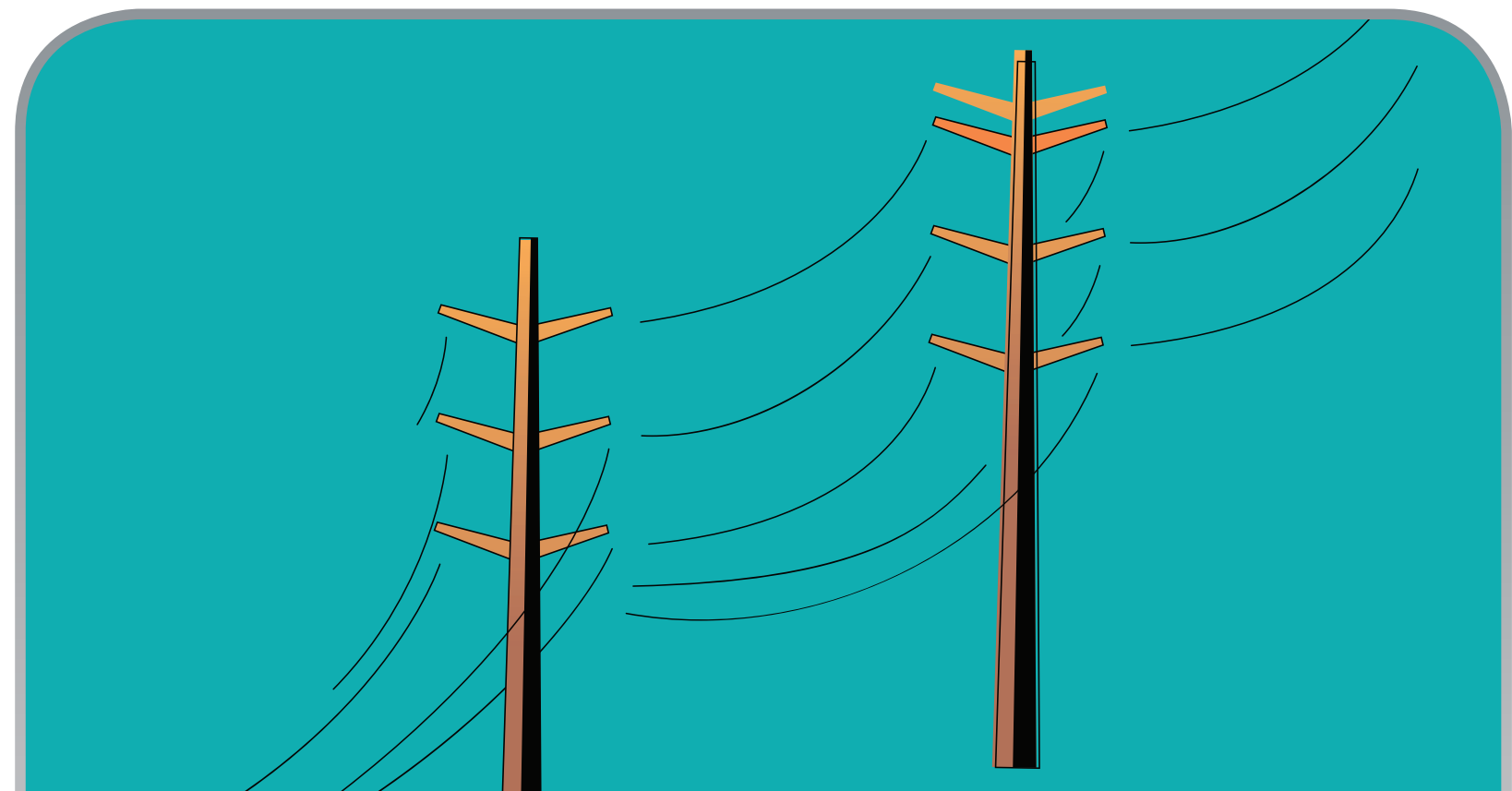
2 EXTRA HIGH-VOLTAGE POWER LINE

Electricity leaves the wind farm substation and travels on a dedicated extra high-voltage 765 kilovolt (kV) power line to a substation near Tulsa.



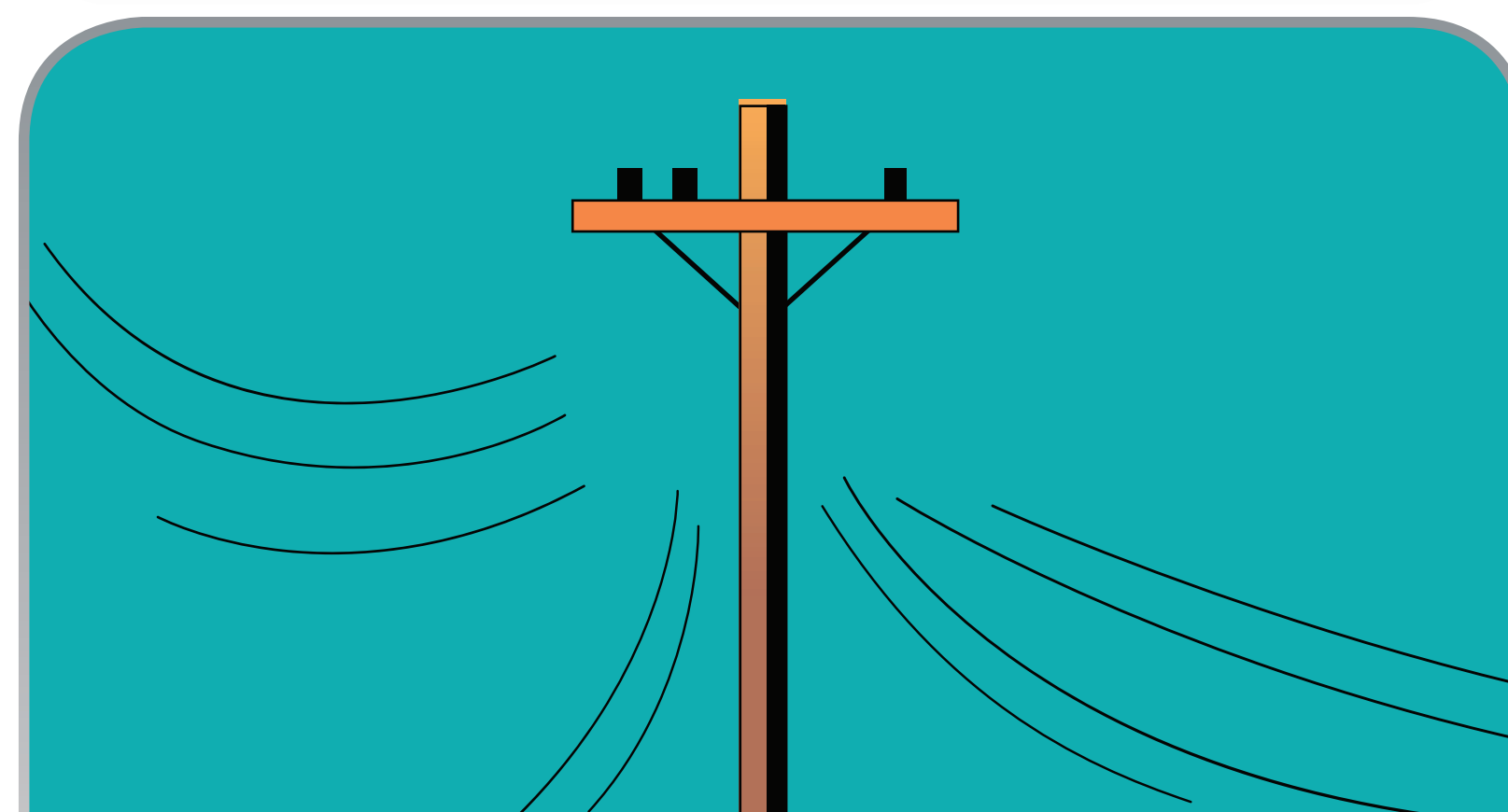
3 SUBSTATIONS

Substations increase or decrease the voltage level for distribution or transmission.



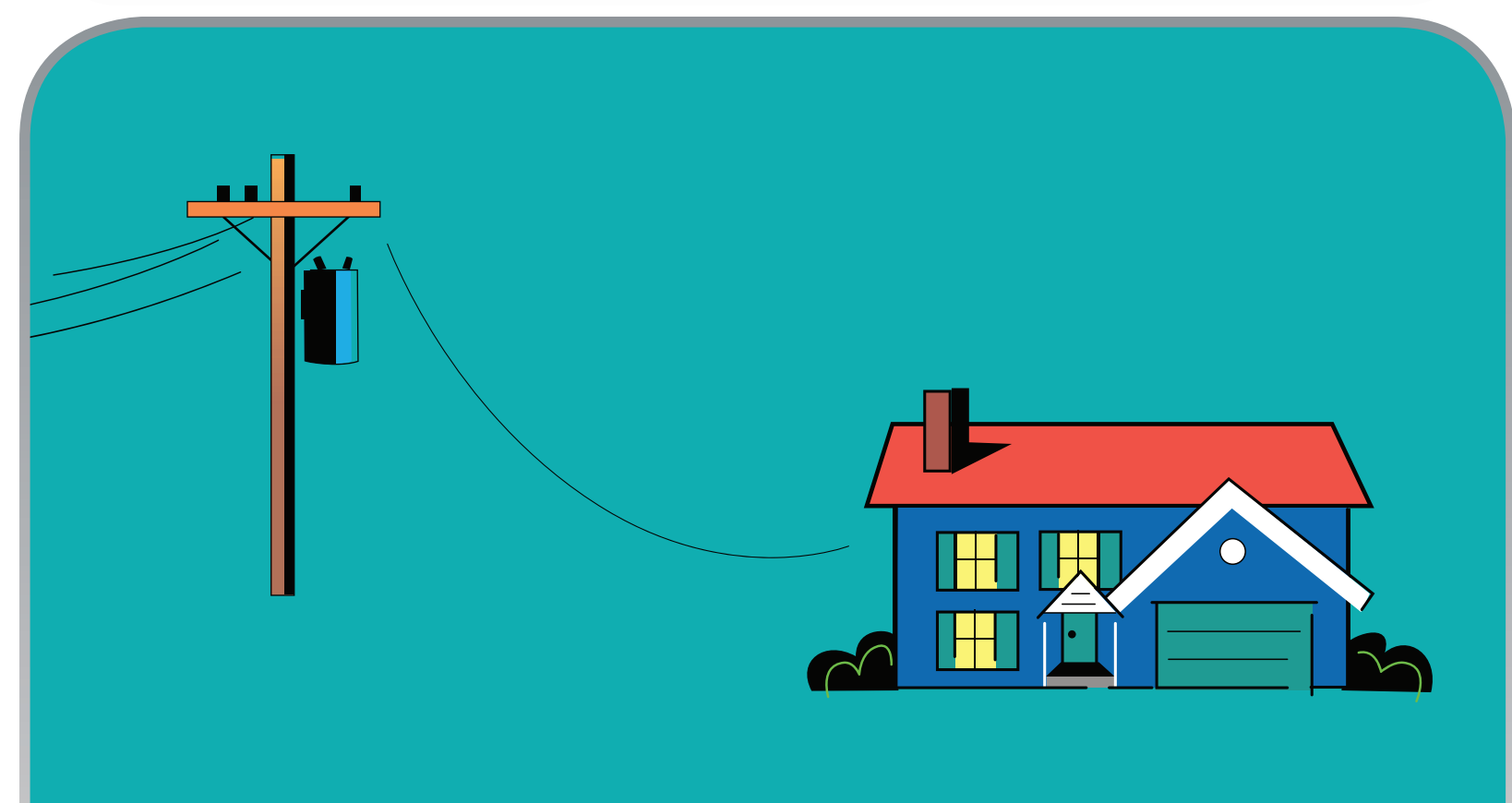
4 LOCAL TRANSMISSION

For transmission, a step-down transformer at a substation reduces the voltage level so it can travel on smaller lines for shorter distances.



5 DISTRIBUTION

Voltage is decreased once again for primary distribution to connect to the community for lateral distribution.



6 INDIVIDUAL SERVICE

Smaller transformers step down voltage levels to a final 120/240 volts for a typical residence.